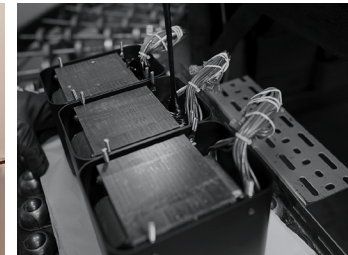


# MI254 power amplifier

- The MI254 4-Channel Digital Amplifier is a versatile multi-channel amplifier ideal for use in distributed audio, home theater or 2-channel stereo playback.
- Delivers 250 Watts into 8 Ohm speakers or 300 Watts into 4 Ohm speakers via highly sophisticated closed loop digital switching amplifiers that are paired with extremely robust power supplies to produce performance levels that are rarely achieved in distributed audio.
- Installer-friendly physical dimensions and is 2U rack mountable via the included mounting ears (ears are removable for non-rack installations).
- As a highly efficient Class D amplifier, it does not require noisy cooling fans to maintain nominal operating temperature.
- Two McIntosh Watt Meters display the summed power output of channels 1 + 2 and channels 3 + 4. Multi-color LED indicators display the status of each channel. Features a balanced and unbalanced input for each channel along with our standard 5-way speaker binding posts.
- Other features included: Power Guard<sup>®</sup> signal overload technology that prevents overdriving the speakers; Sentry Monitor<sup>™</sup> short-circuit protection that disengages the output stage before current exceeds safe operating levels; BUS input & outputs to easily distribute a stereo signal to multiple outputs and/or multiple amplifiers; individual channel inputs; 12 Volt triggering capabilities; and eco-friendly on/off signal sensing.



Distributed Audio or Home Theater Amplifier

**McIntosh<sup>®</sup>**

LEGENDARY PERFORMANCE<sup>®</sup>

[www.mcintoshlabs.com](http://www.mcintoshlabs.com)

# MI254 power amplifier

## Power Output:

250 Watts into 8 Ohm speakers  
300 Watts into 4 Ohm speakers

## Total Harmonic Distortion:

0.025% maximum from 20Hz to 20kHz

## Signal to Noise Ratio:

100dB

## Dynamic Headroom:

8 Ohms: 2.5dB  
4 Ohms: 3.5dB

## Damping Factor:

8 Ohms: >85  
4 Ohms: >45

## Frequency Response:

+0, -0.9dB from 20Hz to 20kHz

## Inputs:

4 Balanced  
4 Unbalanced  
2 BUS

## Overall Dimensions (W x H x D):

17-1/2" (44.45cm) 19" (48.3cm with  
mounting ears) x 4-5/16" (11cm)  
x 21" (53.3cm)

## Weight:

23.5 lbs (10.7kg) net,  
40 lbs (18.1kg) in shipping carton

## For the Consumer's Protection:

In order to ensure the highest level of customer satisfaction, new McIntosh products may only be purchased from an Authorized McIntosh Dealer; and, with certain limited exceptions may only be purchased over-the-counter or delivered and installed by the Authorized McIntosh Dealer. McIntosh does not warrant, in any way, products that are purchased from anyone who is not an Authorized McIntosh Dealer, or that have had their serial numbers altered or defaced.



## Companion Products

The MX160 and MX122 A/V Processors, MVP901 Blu-Ray Player, WS500 and WS300 In-Wall Loudspeakers, and CS200 In-Ceiling Loudspeaker are logical companions for the MI254 Power Amplifier. Your Authorized Dealer can provide additional information on other McIntosh product combinations.

To learn more, please call us at 1.800.538.6576.

# McIntosh®

LEGENDARY PERFORMANCE®

[www.mcintoshlabs.com](http://www.mcintoshlabs.com)